

**ANIVAC®**

**SAN**  
VET



# DIAGNOSTICS AND CUSTOM-MADE VACCINES

## CATTLE

# CMV: CUSTOM-MADE VACCINES

## IMPROVING HEALTH, REDUCING ANTIBIOTIC TREATMENTS

Vaccinations are essential for professional cattle farming since they maintain and improve the health status of the animals.

Custom-made vaccines are specific options to help preventing diseases in cattle and can be an excellent complement to licensed products. Using custom-made vaccines is an effective solution when no commercially licensed product is available for a specific pathogen strain or serotype and are a favourable alternative to using antibiotics.

Custom-made vaccines stimulate animals to form an effective immune protection.

Herd conditions may change constantly because a number of pathogens are able to mutate and change their properties, thereby quickly escaping the prophylactic scope of existing vaccines. Custom-made vaccine concepts offer the possibility to quickly react to these changes by using most actual isolates from the target farm starting with the next batch.

## PRODUCTION PROCESS

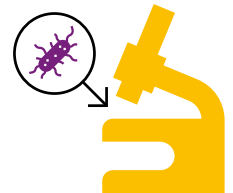
1

Viral and bacterial pathogens weaken the animal.



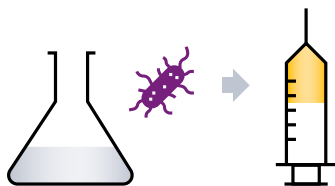
2

Identification of the pathogen from tissue or sampling of the infected animal.



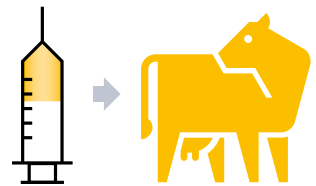
3

Production of a herd-specific vaccine.



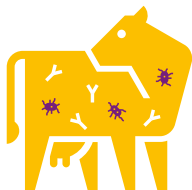
4

Treatment with herd-specific vaccine.



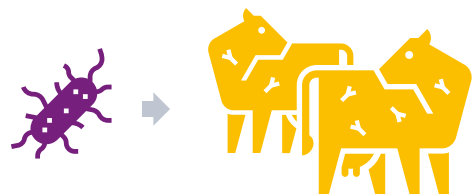
5

After treatment the animal forms antibodies against the pathogen.



6

Vaccine reduces morbidity from field infection.





# DIAGNOSTICS AND CUSTOM-MADE VACCINES FROM A SINGLE SOURCE



The SAN Group Biotech Germany campus features a new plant for custom-made vaccines, unique in the EU.



Targeted sampling in pathology



Production of viral, bacterial and mycoplasma vaccines



State-of-the-art technology for vaccine production



**For further information on our diagnostic services and custom-made vaccines please contact our veterinarians:**

**Dr. Carina Helmer**  
+49 4473 94 38 798  
carina.helmer@san-group.com

**Marius Beumer**  
+49 4473 94 38 625  
marius.beumer@san-group.com

**Dr. Ines Spiekermeier**  
+49 4473 94 38 792  
ines.spiekermeier@san-group.com

**Dr. Juhle-Marijke Buch**  
+49 4473 94 38 167  
juhle-marijke.buch@san-group.com



We at **SAN Vet** regard ourselves as a competent and reliable partner in the field of animal health.

## ANICON®

**Veterinary diagnostics & services**  
(Accreditation ISO 17025)

- Pathology
- Cultural bacteriology
- Cultural virology
- Serology
- PCR and sequencing

## ANIVAC®

**Autogenous vaccines**

- Poultry
- Swine
- Cattle
- Sheep
- Goats
- Fish

## KYLT®

**In-vitro diagnostic products**

- Kylt® Real-Time (RT-) PCR-Kits
- Kylt® Purification Products

## LM-TECH

**Feed- & food diagnostics**  
(Accreditation ISO 17025)

Examination of feed and food, drinking water for animals and humans.

- Microbiological / chemical analysis
- Molecular / immunological analysis
- Histology
- Quality management & consulting



**SAN Vet** ist Ihr kompetenter und verlässlicher Partner im Bereich Tiergesundheit.

## ANICON®

**Veterinärdiagnostik & Services**  
(Akkreditierung ISO 17025)

- Pathologie
- Kulturelle Bakteriologie
- Kulturelle Virologie
- Serologie
- PCR und Sequenzierung

## ANIVAC®

**Bestandsspezifische Impfstoffe**

- Geflügel
- Schwein
- Rind
- Schaf
- Ziege
- Fisch

## KYLT®

**In-vitro Diagnostikprodukte**

- Kylt® Real-Time (RT-) PCR-Kits
- Kylt® Aufreinigungskits

## LM-TECH

**Futter- und Lebensmitteldiagnostik**  
(Akkreditierung ISO 17025)

Prüfung von Futter- und Lebensmitteln, Trink- und Tränkewasser

- Mikrobiologische / chemische Prüfungen
- Molekularbiologische / immunologische Prüfungen
- Histologie
- Qualitätsmanagement & Beratung
- Gegengutachten



**SAN Vet** es un colaborador competente y fiable en el sector de salud animal.

## ANICON®

**Diagnóstico y servicios veterinarios**  
(Acreditación ISO 17025)

- Patología
- Cultivos bacteriológicos
- Cultivos virales
- Serología
- PCR y secuenciación

## ANIVAC®

**Vacunas autógenas**

- Aves
- Cerdos
- Vacas
- Oveja
- Cabra
- Peces

## KYLT®

**Productos de diagnóstico in-vitro**

- Kylt® Real-Time (RT-) PCR-Kits
- Kylt® Productos de purificación

## LM-TECH

**Diagnóstico de piensos y alimentos**  
(Acreditación ISO 17025)

Pruebas de productos alimenticios / piensos, agua potable

- Pruebas microbiológicas / químicas
- Pruebas de biología molecular / inmunológicas
- Histología
- Gestión y asesoramiento de calidad



**SAN Vet** est votre partenaire compétent et fiable dans le domaine de la santé animale.

## ANICON®

**Diagnostic vétérinaire et services**  
(Accréditation ISO 17025)

- Pathologie
- Bactériologie de culture
- Virologie de culture
- Sérologie
- PCR et séquençage

## ANIVAC®

**Vaccins autogènes**

- Volaille
- Cochon
- Bovin
- Mouton
- Chèvre
- Poisson

## KYLT®

**Produits de diagnostic in-vitro**

- Kylt® Real-Time (RT-) PCR-Kits
- Kylt® Produits de purification

## LM-TECH

**Sécurité des produits alimentaires**  
(Accréditation ISO 17025)

Test des produits alimentaires et de l'eau pour consommation humaine / animale

- Tests microbiologiques / chimiques
- Tests de biologie moléculaire / immunologiques
- Histologie
- Gestion de la qualité et service de conseil





## POLYVALENT PRODUCTS

Combinations are possible

## ADJUVANTS

- Aluminiumhydroxide
- Mineral Oil

## VOLUME PER DOSE

- By individual order

## BOTTLE SIZES

- 100 ml
- 300 ml
- 500 ml

Our list of products includes custom-made vaccines for cattle against the following antigens:

### BACTERIAL ANTIGENS INCL. MYCOPLASMA

- Actinobacillus spp.
- Actinomyces spp.
- Clostridium spp.
- Corynebacterium spp.
- Escherichia coli spp.
- Histophilus somni
- Klebsiella spp.
- Mannheimia spp.
- Moraxella spp.
- Mycoplasma bovirhinis
- Mycoplasma bovis
- Mycoplasma spp.
- Pasteurella spp.
- Pseudomonas spp.
- Salmonella spp.
- Staphylococcus spp.
- Streptococcus spp.
- Trueperella pyogenes
- Yersinia spp.

### VIRAL ANTIGENS

- Influenza D
- Bovine Coronavirus



General terms and conditions of SAN Group Biotech Germany GmbH apply ([www.anicon.eu](http://www.anicon.eu)).  
R2.01.17/2024.2 | Rev002

# ANIVAC®

SAN Group Biotech Germany GmbH  
Muehlenstrasse 13 • 49685 Hoeltinghausen • Germany  
+49 4473 94 38 30 • [office-de@san-group.com](mailto:office-de@san-group.com) • [www.anicon.eu](http://www.anicon.eu) • [www.san-vet.com](http://www.san-vet.com)

# SAN® VET